

IMAGE GUIDED LUMBAR SPINAL INJECTION TRAINER P65 | 1021898



The Image Guided Lumbar Spinal Injection Trainer (P65) is an economic alternative for imaging techniques courses using cadavers. It offers instructors a reliable, standardized patient simulation, which is easily ready to use:

- Life-like radiopacity for realistic x-Ray images
- Realistic injection haptics (Spinous processes and dorsal iliac crest)
- Anatomically accurate bone structure
- Visually identifiable landmarks

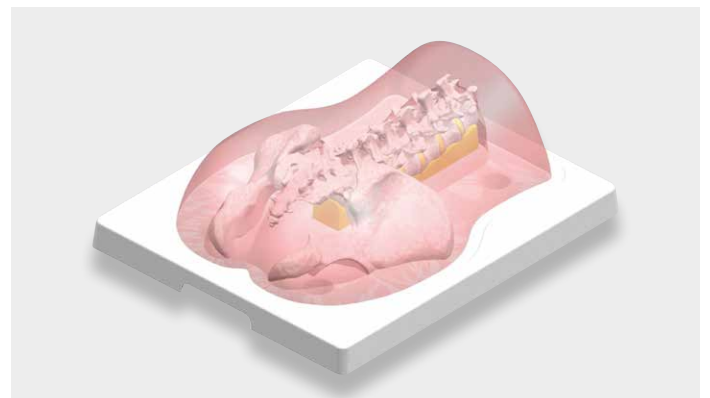
The trainer is ideal for use during imaging courses and can be used repeatedly for injection training thanks to the self-healing material. The following interventional techniques can be trained with the simulator:

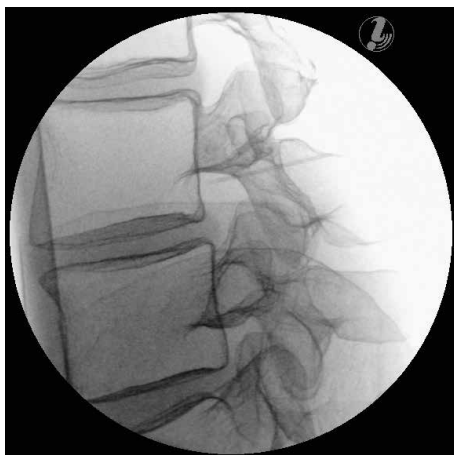
- Landmark guided techniques
- Caudal Epidural Block
- Medial Branch Block / Radiofrequency Ablation (MBB/RF)
- Transforaminal Epidural Steroid Injection (TFESI)
- S1-block
- Sacroiliac Joint Injection (SIJ-injection)
- Interlaminar Epidural Steroid Injection



Note:

The Image Guided Lumbar Spinal Injection Trainer P65 is not a palpation trainer. It has been designed only for imaging techniques course purposes. Any repetitive or strong palpation of the spinous processes structure could cause a perforation of the soft skin material.





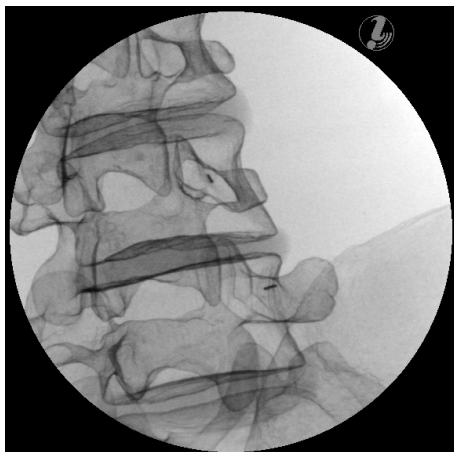
Transforaminal Epidural Steroid Injection (TFSI)
lateral view



Transforaminal Epidural Steroid Injection (TFSI)
oblique view



Transforaminal Epidural Steroid Injection (TFSI)
ap view



Medial Branch Block



S1 Block

Images taken with an X-ray machine combined with an image converter.

References: Instrumentarium Imaging
ZIEHM VISTA

Max KVP: 110kV, Total filtration 4.0 mm AL
Focal spot: 0.5/ 1.5

© Dr. Markus Schneider, Bamberg



Important:

To prolong the life of the trainer please lubricate the needles used with the provided lubricant before any injection into the soft skin material. Do not inject any liquid or contrast substance into the trainer.

> CLEANING INSTRUCTIONS

Clean carefully with a damp cloth. Let the trainer dry by air, then sprinkle on the talcum powder provided. Carefully rub it over the entire surface and store the model with the protection cover in the storage box.

> OPERATING CONDITIONS

In order to ensure shape stability of the soft skin material, the operating temperature and storage temperature should not be exceeded.

Operating temperature 0°C to +30°C (32°F - 86°F)

Storage temperature -10°C to +30°C (14°F - 86°F)

The simulator contains no substances indicated in the REACH regulation EC no. 1907/2006

> TECHNICAL DATA

Dimensions: Block (420 x 350 x 125 mm),
storage box (600 x 400 x 220 mm)

Weight: Block (approx. 2190 g),
storage box with contents (approx. 3170 g)

> SHIPPING AND TRANSPORT CONDITIONS

The skin parts must be stored on the provided pedestal base. Always use the protective cover when trainer is in the box or otherwise stored.

© Copyright 2019 for instruction manual and design of product: 3B Scientific GmbH, Germany



3B Scientific GmbH • Rudorffweg 8 • 21031 Hamburg • Germany • 3bscientific.com

Phone: +49 40 73966-0 • Fax: +49 40 73966-100 • E-mail: info@3bscientific.com