

INSTRUCTION MANUAL

S506 - FEMALE PELVIC ORGANS

SIMA® MODELS

GAUMARD® SCIENTIFIC COMPANY, INC.

14700 S.W. 136 STREET

MIAMI, FL 33196-5691

(800) 882-6655 / (800) 546-2308 USA Toll Free

(305) 971-3790 / (305) 666-8548 WORLDWIDE

(305) 971-4121 / (305) 667-6085 FAX

e-mail: sima@gaumard.com

©1993 GAUMARD SCIENTIFIC COMPANY, INC.
ALL RIGHTS RESERVED

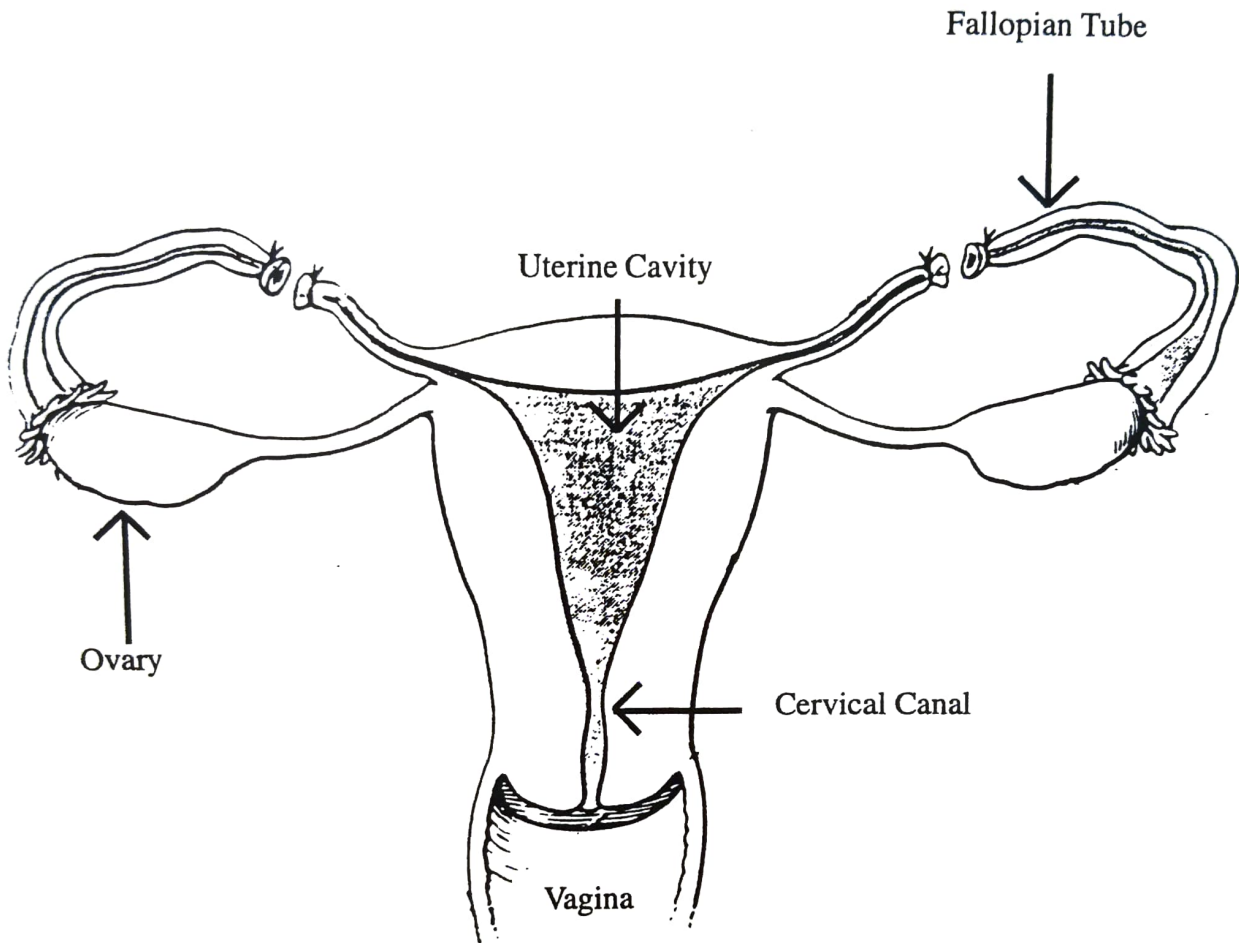
Revised June, 1996

PLEASE READ THE FOLLOWING INSTRUCTIONS PRIOR TO
COMMENCING TRAINING EXERCISES ON YOUR SIMULATOR.

HANDLE YOUR SIMULATOR IN THE SAME MANNER AS YOU WOULD
HANDLE YOUR PATIENT - WITH CARE AND CONSIDERATION.

SHOULD YOU HAVE ANY QUESTIONS AFTER READING THIS
INSTRUCTIONAL MANUAL, PLEASE CALL OUR TOLL-FREE NUMBER
(800) 882-6655.

S506 - FEMALE PELVIC ORGANS



The **S506** permits easy viewing of correct IUD placement.

Demonstration of IUD placement may be performed with any approved IUD.

The simulator may be washed with soap and water, or mild detergent. Do not use harsh abrasives or wrap in newsprint. Any marks made with ink or marker will remain.

Please feel free to contact Gaumard® Scientific at one of the following numbers:

(800) 882-6655

(305) 666-8548

(305) 667-6085

<http://www.gaumard.com>

sima@gaumard.com

**TOLL FREE
WORLDWIDE
FAX
INTERNET
E-MAIL**