

Five Year CPR and Trauma Care Simulator

S151 | S152



Gaumard[®]
Simulators for Health Care Education

Five Year CPR and Trauma Care Simulator is an interactive educational system developed to assist a certified instructor. It is not a substitute for a comprehensive understanding of the subject matter and not intended for clinical decision making.

User Guide 13.5.1
© Gaumard Scientific Company, 2013
All Rights Reserved
www.Gaumard.com

End User License Agreement

Care and Cautions

| | |
|-------------------------------|----------|
| Overall Warnings | 7 |
| General | 7 |
| Operating Conditions | 7 |
| Storage Conditions | 7 |
| Cleaning | 7 |

Equipment Set Up

| | |
|-------------------------------------|----------|
| Equipment Set Up for the S152 | 8 |
| Power Supply | 8 |
| Omni™ Setup | 8 |

Working with Five Year CPR Simulator

| | |
|---|-----------|
| Overview | 9 |
| Airway | 9 |
| Appearance | 9 |
| Breathing | 9 |
| Circulation | 9 |
| Control | 9 |
| Simulator | 9 |
| Airway | 9 |
| Safe CPR Individual Disposable Airways | 9 |
| Instructions for removing and replacing disposable airway | 9 |
| Breathing | 10 |
| Pulmonary Ventilation | 10 |
| Circulation | 10 |
| Palpable Pulses | 10 |
| Systemic | 10 |
| Teeth and Tongue | 10 |
| Range of Simulated Movement | 10 |
| Hospital Care Capabilities | 10 |
| Injection Sites | 10 |
| Bandaging | 11 |
| Eyes/Ophthalmologic Exercises | 11 |

Omni™ Code Blue®

| | |
|------------------------------------|-----------|
| Controller for the S152 | 12 |
| Using Omni™ Code Blue | 12 |
| Main Screen | 12 |
| Feedback Graphics | 12 |
| Current Settings..... | 12 |
| Code Blue Navigation Menus | 12 |
| CPRLink™ | 15 |
| Setup | 15 |
| CPR Screen..... | 16 |
| CPR Link Menus..... | 21 |

Appendix

| | |
|---|-----------|
| Troubleshooting | 26 |
| General Troubleshooting Guide..... | 26 |
| Warranty | 27 |
| Exclusive One-Year Limited Warranty | 27 |

End User License Agreement

This is a legal agreement between you, the end user, and Gaumard® Scientific Company, Inc. ("Gaumard"). This software is protected by copyright laws and remains the sole property of Gaumard. By installing the GaumardUI (the "Software") media, you agree to be bound by the terms of this agreement. If you do not agree to the terms of this agreement, promptly return the uninstalled media and accompanying items to Gaumard at the address indicated below.

1. **Grant of License.** Gaumard hereby grants to you (an individual or institution) the right to install and activate the Software on one computer for use with one Interactive patient simulator system. The software may also be installed on any number of other computers at the same institution so that students may access the learning resources. One copy of the software may be made for backup purposes. You may not network this Software, or allow multiple users unless you purchased a multi-user workstation license. Sharing this Software with other individuals or allowing other individuals to view the contents of this Software is in violation of this license.
2. **Copyright.** The Software is owned by Gaumard and protected by United States copyright laws and international treaty provisions. Therefore, you must treat this Software like any other copyrighted material. You may not make this Software or copies thereof available in any manner or form or use, copy or transfer the Software, in whole or in part, except as provided herein.
3. **Other Restrictions.** You may not rent or lease this Software to any other party. You may not alter, merge, modify, adapt, reverse engineer, decompile or disassemble the software, or disclose the contents of this Software to any other party.
4. **Electronic Transmission of Software.** If you received the Software by electronic transmission or by Internet delivery, by installation of the Software, you acknowledge that you have read and understand this license agreement and agree to be bound by its terms and conditions.
5. **Term of Agreement.** The term of this Agreement and the license granted to you pursuant hereto shall commence upon installation of this Software. This Agreement and the license granted herein may otherwise be terminated by Gaumard in the event that you are in breach of any provision of this Agreement. In the event of termination, you agree to immediately return this Software, accompanying items, and any copies thereof to Gaumard.

6. LIMITED WARRANTY

(A) THE CD-ROM MEDIA (THE "MEDIA") WHICH CONTAINS THIS SOFTWARE IS WARRANTED, FOR A PERIOD OF 30 DAYS FROM THE DATE OF PURCHASE, TO BE FREE FROM DEFECTS IN MATERIAL AND WORKMANSHIP. ELECTRONIC TRANSMISSION IS WARRANTED TO BE FREE FROM DEFECTS AT THE MOMENT OF TRANSMISSION. YOUR SOLE AND EXCLUSIVE REMEDY, AND GAUMARD'S SOLE LIABILITY, IS TO REPLACE THE DEFECTIVE MEDIA OR TO REPEAT THE ELECTRONIC TRANSMISSION PROVIDED THAT YOU NOTIFY GAUMARD IN WRITING OF SUCH DEFECT OR DEFECTIVE TRANSMISSION AND RETURN THE DEFECTIVE MEDIA, IF ANY, DURING THE 30-DAY WARRANTY PERIOD.

(B) EXCEPT AND TO THE EXTENT EXPRESSLY PROVIDED IN PARAGRAPH (A), THE SOFTWARE AND ACCOMPANYING WRITTEN MATERIALS ARE PROVIDED ON AN "AS IS" BASIS, WITHOUT ANY WARRANTIES OF ANY KIND, INCLUDING, BUT NOT LIMITED TO, ANY IMPLIED WARRANTIES OF MERCHANTABILITY OR FITNESS FOR ANY PARTICULAR PURPOSE. NO ORAL OR WRITTEN INFORMATION OR ADVICE GIVEN BY GAUMARD, ITS DEALERS, DISTRIBUTORS, AGENTS OR EMPLOYEES SHALL CREATE A WARRANTY OR IN ANY WAY INCREASE THE SCOPE OF THIS WARRANTY, AND YOU MAY NOT RELY ON ANY SUCH INFORMATION OR ADVICE. GAUMARD DOES NOT WARRANT, GUARANTEE, OR MAKE ANY REPRESENTATIONS REGARDING THE USE OR THE RESULTS OF USE, OF THE SOFTWARE OR WRITTEN MATERIALS IN TERMS OF CORRECTNESS, ACCURACY, RELIABILITY, CURRENTNESS, OR OTHERWISE, AND THE ENTIRE RISK AS TO THE RESULTS AND PERFORMANCE OF THE SOFTWARE IS ASSUMED BY YOU. IF THE SOFTWARE OR WRITTEN MATERIALS ARE DEFECTIVE, YOU AND NOT GAUMARD OR ITS DEALERS, DISTRIBUTORS, AGENTS, OR EMPLOYEES, ASSUME THE ENTIRE COST OF ALL NECESSARY SERVICING, REPAIR OR CORRECTION OTHER THAN EXPRESSLY DESCRIBED ABOVE.

(C) NEITHER GAUMARD NOR ANYONE ELSE WHO HAS BEEN INVOLVED IN THE CREATION, PRODUCTION OR DELIVERY OF THIS PRODUCT SHALL BE LIABLE FOR ANY DIRECT, INDIRECT, CONSEQUENTIAL OR INCIDENTAL DAMAGES (INCLUDING DAMAGES FOR LOSS OF BUSINESS PROFITS, BUSINESS INTERRUPTION, LOSS OF BUSINESS INFORMATION, AND THE LIKE) ARISING OUT OF THE USE OR INABILITY TO USE SUCH PRODUCT OR RELATED TO THIS AGREEMENT EVEN IF GAUMARD HAS BEEN ADVISED OF THE POSSIBILITY OF SUCH DAMAGES. GAUMARD SHALL NOT BE LIABLE TO YOU FOR ANY INDIRECT, SPECIAL, INCIDENTAL, OR CONSEQUENTIAL DAMAGES OR LOST PROFITS ARISING OUT OF OR RELATED TO THIS AGREEMENT OR YOUR USE OF THE SOFTWARE AND/OR THE RELATED DOCUMENTATION, EVEN IF GAUMARD HAS BEEN ADVISED OF THE POSSIBILITY OF SUCH DAMAGES. IN NO EVENT SHALL GAUMARD'S LIABILITY HERE UNDER, IF ANY, EXCEED THE PURCHASE PRICE PAID BY YOU FOR THE SOFTWARE.

ALL RIGHTS NOT EXPRESSLY GRANTED IN THIS LICENSE AGREEMENT ARE RESERVED BY GAUMARD.

ACKNOWLEDGMENT

BY INSTALLATION OF THIS SOFTWARE, YOU ACKNOWLEDGE THAT YOU HAVE READ AND UNDERSTAND THE FOREGOING AND THAT YOU AGREE TO BE BOUND BY ITS TERMS AND CONDITIONS. YOU ALSO AGREE THAT THIS AGREEMENT IS THE COMPLETE AND EXCLUSIVE STATEMENT OF AGREEMENT BETWEEN THE PARTIES AND SUPERSEDES ALL PROPOSED OR PRIOR AGREEMENTS, ORAL OR WRITTEN, AND ANY OTHER COMMUNICATIONS BETWEEN THE PARTIES RELATING TO THE LICENSE DESCRIBED HEREIN.

Care and Cautions

Overall Warnings

Remember that damage caused by misuse is not covered by your warranty. It is critical to understand and comply with the following guidelines:

GENERAL

- This simulator is constructed of material that approximates skin texture. Therefore, in handling the model, use the same gentle techniques as you would in working with a patient.
- Ball point pens, ink and markers permanently stain the skin.
- Do not wrap this or any other Gaumard product in newsprint.
- Do not use alcohol, acetone, Betadine® or any other antiseptic which contains iodine in this or any Gaumard® simulator. These products could damage or stain the skin of the simulator.
- Replacement parts are available from Gaumard Scientific or your Distributor.

OPERATING CONDITIONS

Operating the simulator outside these ranges may affect performance:

- Operating temperature: 50°- 95° F (10°- 35° C).
- Humidity: 5%-95% (non-condensing).

STORAGE CONDITIONS

- Improper storage may damage the simulator.
- Keep it stored in the box and/or bag provided.
- Do not stack or store heavy materials on top of the carton.
- Storage temperature: 32°- 113° F (0°- 45° C).
- Humidity: 40%-60% (non-condensing).

CLEANING

- Clean the skin of the simulator after every training session. The skin should be cleaned with a cloth dampened with diluted liquid dish washing soap and dry thoroughly.
- Remove all traces of any lubricant.
- Do not clean with harsh abrasives.
- Do not use povidone iodine on the simulator.
- The simulator is “splash-proof” but not waterproof. Do not submerge or allow water to enter the interior of the simulator.

Equipment Set Up

EQUIPMENT SET UP FOR THE S152

Power Supply

1. Place the simulator on a flat clean surface. Access to electrical power is required.
2. Connect the power supply to the power input located on simulator's left side, and then connect the power supply to the wall outlet.



2. Connect the other end of the communication cable to Omni.



A startup screen is shown while Omni is detecting the simulator features.

After the start up screen, Omni will automatically proceed to the main screen.

Omni™ Setup

Omni controls the simulator with the touch of button.

1. Connect the communication cable to the left side of the simulator.



WARNING

Do not connect Omni to a computer, LAN network or unauthorized diagnostic equipment using the communication cable (Ethernet cable). Doing so will cause serious damage to the equipment.

Working with Five Year CPR Simulator

Overview

Disclaimer: The section below describes all possible features in the Five Year Trauma Care Simulator. Please use the list below to identify which features are standard in your model. The content is subject to change without prior notice. Please contact Gaumard® Scientific for the most current information.

The simulator is an advanced multipurpose simulator equipped with the following features:

AIRWAY

- Chest compressions and airway ventilations are measured and logged
- Natural obstruction blocks air passage when head is tilted forward
- Disposable airways

APPEARANCE

Eyes open and close; left pupil is dilated

Medium skin tone is the standard simulator color; light or dark skin is available at no extra cost

BREATHING

- Accommodates assisted ventilation
- Realistic chest rise

CIRCULATION

- Intramuscular (IM) Injection Sites on the deltoids and quadriceps
- Simulated carotid pulses and right femoral pulse

CONTROL

- Powerful yet intuitive user controller and interface software

SIMULATOR

- Disposable airways
- Easily accessible chest cavity with ribcage and lungs for realism and practice of CPR techniques
- Palpable and visual landmarks for CPR
- Physical size is 50th percentile of 5 year old

Airway

WARNING

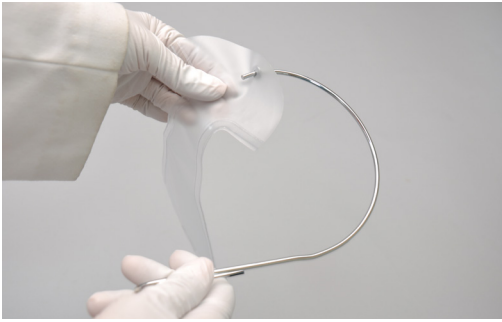
Always use disposable airways provided by Gaumard Scientific Company. Products manufactured by other suppliers may have different compliance and/or volume, and are not compatible with the simulator or Omni.

SAFE CPR INDIVIDUAL DISPOSABLE AIRWAYS

INSTRUCTIONS FOR REMOVING AND REPLACING DISPOSABLE AIRWAY

1. Release the Velcro strip and lift the chest skin away from the chest cavity.
2. Remove the ribcage.
3. Remove the disposable airway by grasping and pulling it away from simulator. Each student should have an airway.

4. Thread the introducer through the hole at the end of the disposable airway.



5. With the head tilted back, ease the introducer up through the neck using an upward curving motion.
6. Ease the introducer through the mouth, and straighten the disposable airway within the chest cavity.
7. Remove the introducer from the disposable airway.
8. Position the ribs on top of the disposable airway and reattach the skin to the upper torso.

Breathing

PULMONARY VENTILATION

Ventilate using mouth-to-mouth resuscitation or a BVM and obtain realistic, dual chest rise.

Change the airway for each student when practicing mouth-to-mouth resuscitation.

The simulator blocks air passage when the head is tilted forward.

Train CPR with the simulator and obtain feedback information via the Omni controller on the cadence and depth of chest compressions and airway ventilations.

Circulation

PALPABLE PULSES

The simulator is equipped with bilateral carotid pulses and right femoral pulse. The pulses can be generated manually using the squeeze bulb located on the left side of the simulator.

Systemic

TEETH AND TONGUE

The simulator is supplied with normal size teeth and tongue.

RANGE OF SIMULATED MOVEMENT

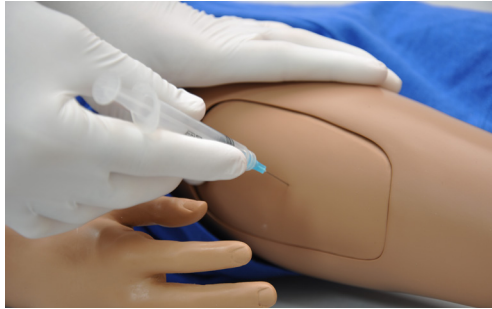
- The arms and legs are soft and rotate within the torso body.
- The joints are strong and their movements are lifelike and realistic.
- The simulator bends 30 degrees at the waist.

Hospital Care Capabilities

INJECTION SITES

Administer intramuscular and subcutaneous injections on the deltoids and quadriceps. All injection pads are easily removed and replaced.





BANDAGING

The fingers and toes of the simulator are separated to permit bandaging exercises. The surface of the simulator is smooth and resistant to water, oil, and liniments.

EYES/OPHTHALMOLOGIC EXERCISES

The head has eyes that open and close, permitting the following exercises:

- Administration of orbital medicines into the conjunctival sac
- Removal of foreign bodies
- Eye irrigation

Omni™ Code Blue®

CONTROLLER FOR THE S152

Using Omni™ Code Blue

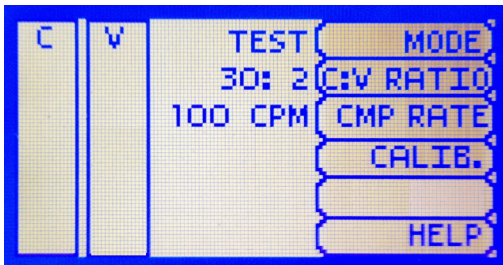
Code Blue® is a CPR training tool incorporated in the Omni controller. It was designed to help teach CPR by monitoring cadence and depth of cardiac compressions and airway ventilations in real time.

WARNING

Only perform mouth to mouth ventilation with the individual disposable airway in place.

MAIN SCREEN

The Omni main screen is divided into three sections which are, listed from left to right, the Feedback Graphics, Current Settings, and Navigation Menus. Pressing each button will display the menu item in detail.



FEEDBACK GRAPHICS

Monitor and evaluate depth and cadence of compressions and ventilations in real time.

CURRENT SETTINGS

The current settings are listed on the middle of the screen. The settings will reflect the information saved during a previous session.

CODE BLUE NAVIGATION MENUS

Edit the simulator settings using the navigation menu. Select a menu item by pressing the soft key buttons located on the right side of the controller. Each menu has additional submenus or toggle selection. Use the submenus to decrease, increase, accept, or cancel values. Use the toggle selection to switch between available options in the menu.

The Code Blue menus are:

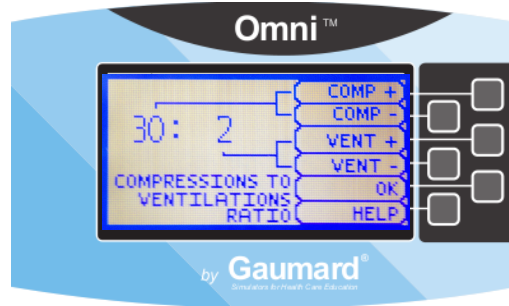
- CPR operational mode: TEST or COACH mode
- C:V Ratio: customize the compression to ventilation ratio to match correct guidelines
- Compression/Ventilation Rate: adjust the number of compressions and ventilations per minute
- Calib: calibrate the pressure sensor in the simulator
- Help: universal help menu

MODE MENU

Toggle between COACH and TEST modes. The COACH mode generates audible tones to coach CPR ratio. A high-pitched beep signals the care provider to perform a compression and a low pitched-beep signals a ventilation. Toggle to the TEST mode to perform CPR without the audible cues.

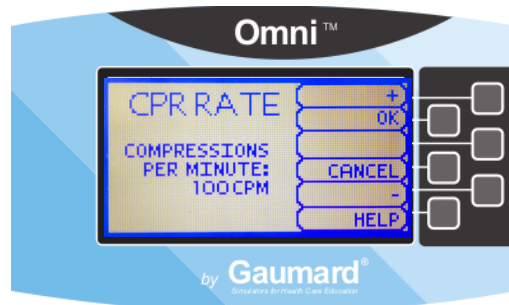
C:V RATIO MENU (COMPRESSION TO VENTILATION RATIO)

Adjust the compression to ventilation ratio using the + and - buttons. Press OK to save the changes and return to previous screen. The default value for the C:V Ratio is 30 compressions to 2 ventilations.



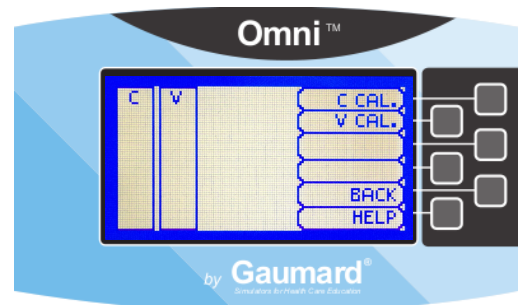
COMPRESSION / VENTILATION RATE MENU

The default value for the compression rate is 100 compressions per minute. Adjust rate using the '+' and '-' buttons. Press OK to save the changes and return to previous screen. The compression rate limit is 50 - 150 CPM. The ventilation rate limit is 2 - 60 VPM.



CALIBRATION MENU

Press CALIB. to access additional menu selections.

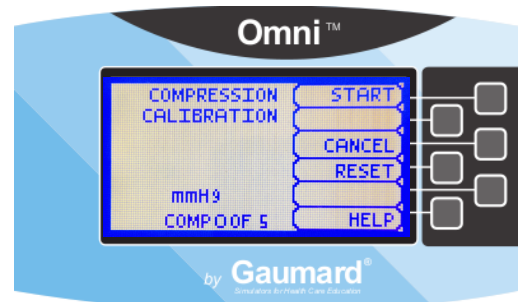


CALIBRATING CHEST COMPRESSIONS

The simulator is pre-calibrated to current CPR guidelines at time of manufacture. If the CPR guidelines change, calibrate the sensors inside the simulator using this option.

Calibrating chest compressions:

1. Select C CAL.
2. Press START to begin the calibration procedure.



3. Omni will ask you to perform several correct chest compressions. The facilitator should follow the text cue on the screen to perform just one compression at a time until finished. When Omni is ready to proceed it will display COMPRESS.
4. Perform a correct compression.
5. Follow the text cue on the screen to perform the remaining four compressions. When the calibration is complete Omni will display DONE.
6. Press SAVE.

CALIBRATING AIRWAY VENTILATIONS

Set the standard against which ventilation will be evaluated during training.

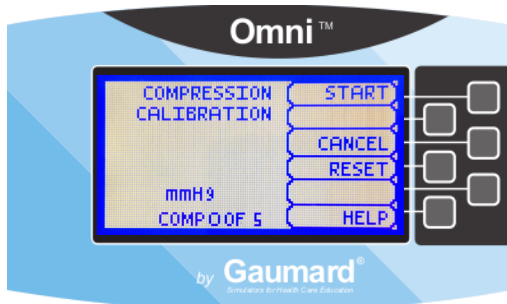
Calibrating airway ventilations:

1. Select V CAL.
2. Press START to begin the calibration procedure.
3. Omni will ask you to perform a number of correct airway ventilations. The facilitator should follow the text cue on the screen to perform just one ventilation at a time, until finished.
4. When Omni is ready to calibrate it will display VENTILATE.
5. Perform a ventilation.
6. Follow the text cue on the screen to perform the remaining four ventilations. When the calibration is complete Omni will display DONE.
7. Press SAVE.

RESETTING OMNI'S PRESSURE SENSOR

It is recommended that the Omni's pressure sensor is reset at altitudes greater than 1000 ft. to avoid inaccurate compressions and ventilations readings. Perform the sensor reset procedure only as part of the initial calibration process.

1. Select RESET within the compression or ventilation calibration menu.



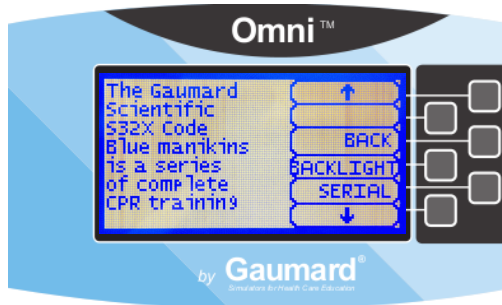
After resetting the sensor, Omni will display DONE.

2. Select SAVE to finish.



HELP

The help window provides access to global settings such as backlight time and Omni/Simulator serial number.



BACK

Return to previous screen.

BACKLIGHT

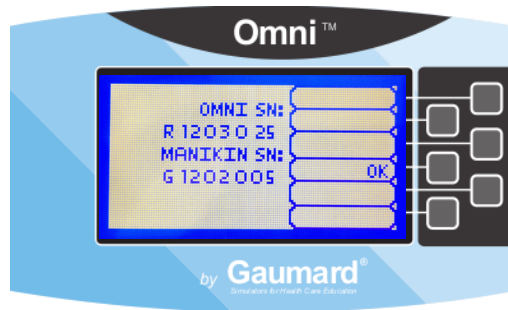
The default value for Omni's backlight timer is 10 minutes. After 10 minutes the backlight will turn off.

To increase the backlight duration, adjust the backlight timer with the plus or minus sign. Press OK to accept the changes.



SERIAL NUMBER

View Omni and Simulator serial number. Press OK to return to the HELP menu.



CPRLink™

CRPLink is an application that enables monitoring and logging of compressions and ventilations, performed in real time by the user, on a PC.

This software aims to provide additional testing and teaching tools for CPR using an interface to display a waveform graph of the compressions and ventilations.

CPRLINK MINIMUM SYSTEM REQUIREMENTS

- Operating System: Windows XP or Windows 7
- Computer and processor: 1 gigahertz (GHz) or faster 32-bit (x86) or 64-bit (x64) processor
- Memory: 1 gigabyte (GB) RAM (32-bit) or 2 GB RAM (64-bit)
- Hard disk: 4 gigabyte (GB) available disk space
- Install media: CD/DVD Drive
- I/O Ports: USB port

SETUP

CPRLINK SOFTWARE INSTALLATION

If installing the CPRLink software for the first time, follow the instructions listed below:

1. Insert the CPRLink installation CD in your PC.
2. Follow the instructions on your screen.

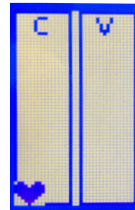
In case the auto run is disabled, open My Computer. In the My Computer window, open the drive that contains the CPRLink CD. Double-click on CPRLink and locate the setup file "RunMeFirst". Double-click on "RunMeFirst" to start the installation.

If installing the application on a Windows 7 computer, run the program as administrator. Right click the CPRLink icon and select Properties. Select the Compatibility tab and check mark the option "Run this program as an administration". Click on Apply and then OK to close the window.

EQUIPMENT SET UP

1. Connect the power supply to the power input on the simulator, and then connect the power supply to the wall outlet.
2. Connect the communication cable to the simulator and to Omni.
3. Connect the USB cable to Omni and to the USB port of your PC.

Omni will display a heart icon on the lower left side of the screen when a connection with the PC has been established.

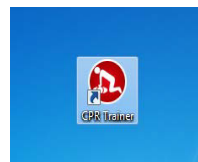


WARNING

Do not start the CPRLink application until Omni is connected to the PC.

STARTING CPRLINK

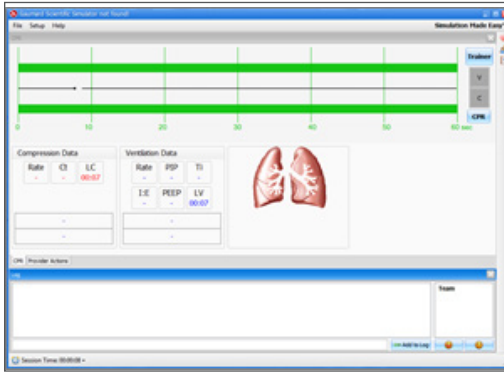
Double click on the CPRLink icon on the desktop of your PC.



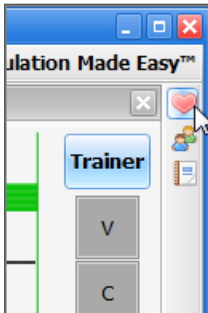
CPR SCREEN

The CPRLink main screen contains the drop-down menus used to save and clear session logs, change the application options, and access the program's help.

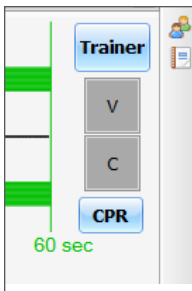
The main screen also contains the controls used to evaluate compressions and ventilations.



Open the CPR evaluator by clicking on the shortcut icon located on the upper right side of the application.



The provider performance indicator boxes are located on the right. The V (ventilation) and C (compression) box fill color changes between the following states:



- Grey: no intervention was detected.
- Yellow: compression was too shallow. Ventilation was too weak.

- Green: compression/ventilation was performed correctly.
- Red: compression was too deep. Ventilation was too strong.

Compression and ventilation data is displayed at the bottom of the window as CPR is performed by the provider.



COMPRESSION DATA

- Rate: rate of compressions in real time.
- Ct (Compression time): average length of each compression in seconds.
- LC (Last Compression): time elapsed since the last compression performed.

VENTILATION DATA

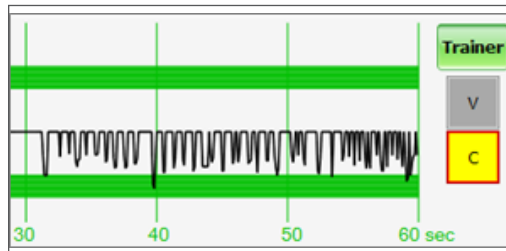
- Rate: ventilation rate in real time.
- PIP: Peak Inspiratory Pressure
- Ti: time inspiration
- I:E: Inspiratory : Expiratory ratio
- PEEP: Positive End Expiratory Pressure
- LV (Last Ventilation): time elapsed since the last ventilation performed

TRAINER

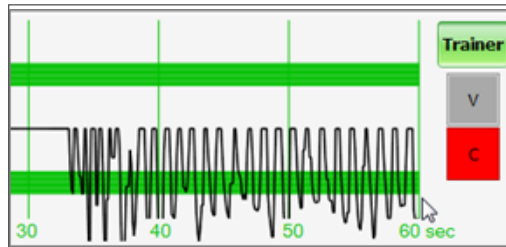
The CPRLink application generates visual and audible cues of the compression to ventilation ratio programmed in the CPR Options menu. When the Trainer button is clicked, the V (ventilations) and C (compressions) box borders blink to indicate the correct reference CPR rate. A high-pitched beep signals the care provider to perform a compression and a low pitched-beep signals a ventilation.

PERFORMANCE EXAMPLES

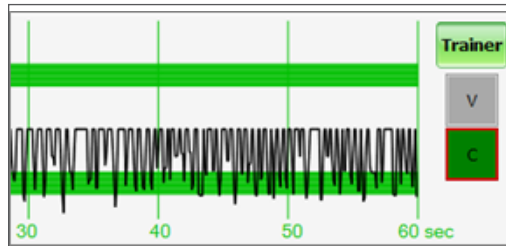
Compressions are too shallow. Most waveform peaks do not reach the green zone. Compression indicator is yellow.



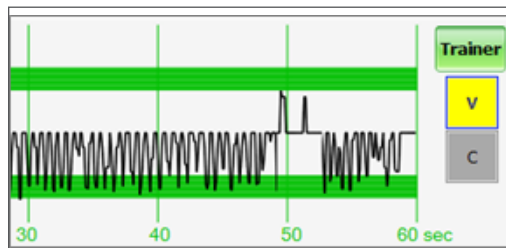
Compressions are too deep. Waveforms peaks mostly exceed the green zone. Compression indicator is red.



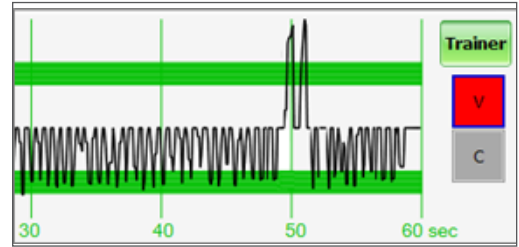
Compressions are performed correctly. Waveform peaks are mostly inside the green zone.



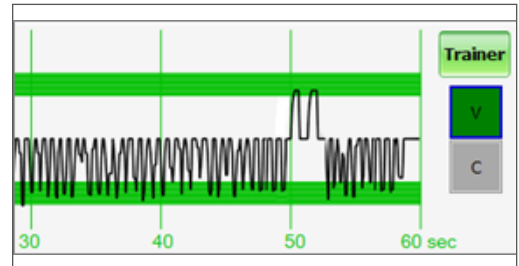
Ventilations are too shallow. Waveform peaks do not reach the green zone.



Ventilations are too strong. Waveform peaks exceed the green zone.

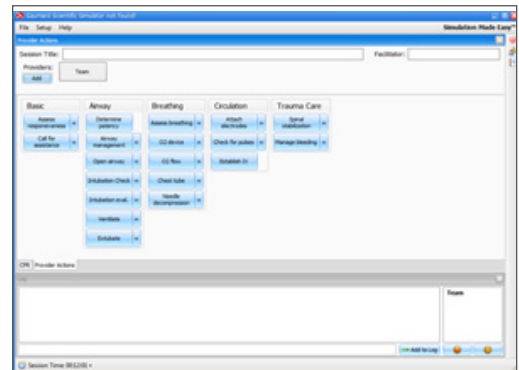


Ventilation was performed correctly. Waveform peak is inside the green zone.

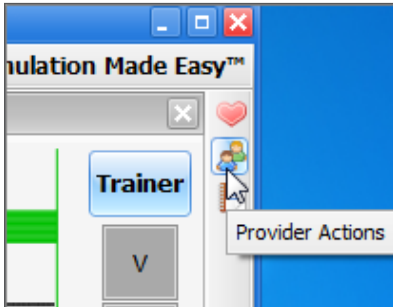


PROVIDER ACTIONS SCREEN

The provider actions screen allows the facilitator to keep track of every event during a session. It automatically creates an entry whenever a detected event occurs. Also, the facilitator can log provider actions with a simple click.



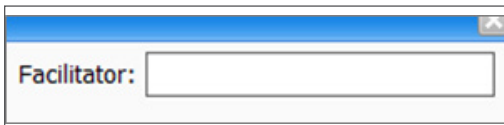
Open the provider actions screen by clicking on the shortcut icon located on the upper right side of the application.



The Provider Actions screen consists of four different areas (from top to bottom): session info, team logging buttons, provider action buttons, and text log.

SESSION INFO

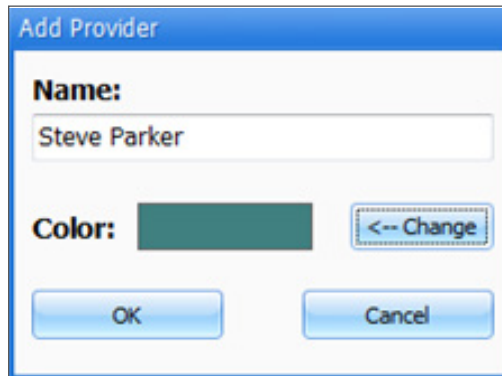
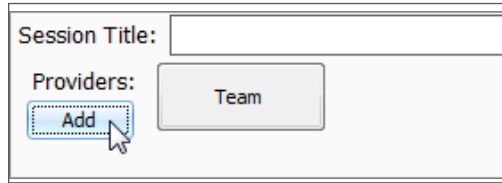
The header section consists of the 'Session Title' and 'Facilitator' fields at the top of the Team Logging section. Type the session title and facilitator name directly into the note field. It serves as assisting with record keeping purposes when a report is saved or printed.



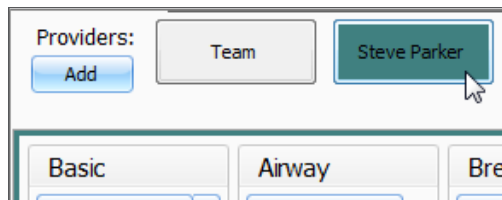
TEAM LOGGING

The Team Logging feature allows the facilitator to designate which member of the team performed a particular action. The Team Logging section is right above the Provider Actions section.

First, the facilitator should add all providers in the team, one by one, by clicking the Add button and filling out the Add Provider dialog box.



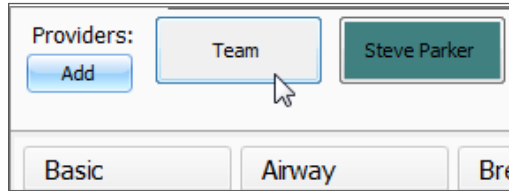
A colored button is inserted on the Team Logging region for the provider just added. There can be up to six different providers, each with a corresponding button. Every time one of the provider buttons is clicked, that person becomes the active provider. To indicate the active provider, the vertical bars on each side of the Log page will match the color chosen for that person.



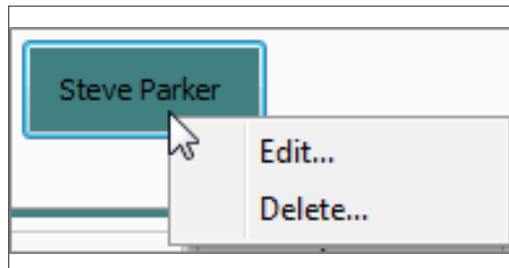
On the Log Page image, for example, the provider "Steve" is the active provider, so the vertical bars are teal colored. While there is an active provider, every time a Provider Action or Evaluation log entry is created it will have the name of the provider as follows:

"00:07:41 [Steve Parker] Action (Ventilate): BVM"

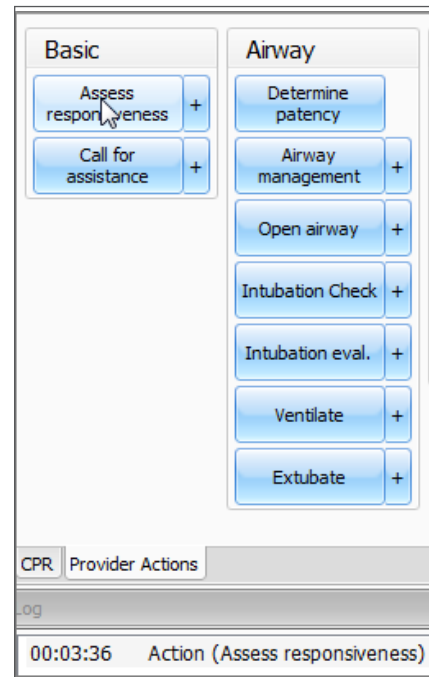
To deselect the active provider and return to general logging, click the Team button and the vertical bars will return to neutral color.



All provider buttons can be edited or deleted by right-clicking them and selecting an option from the menu.

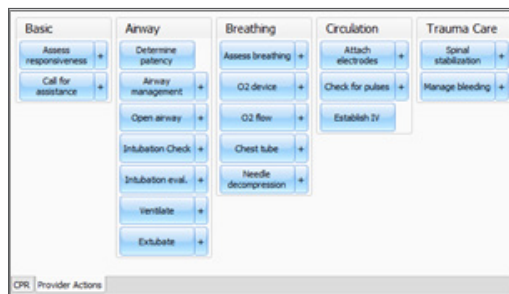


“00:03:36 Action (Assess Responsiveness)”



PROVIDER ACTIONS

This section refers to the collection of buttons in the middle of the page. It allows the facilitator to accurately keep track of provider actions. The buttons are grouped into 6 groups: Basic, Airway, Breathing, Circulation, and Trauma Care. Anytime the facilitator clicks one of the buttons, a time-stamped log entry is generated with that particular action.



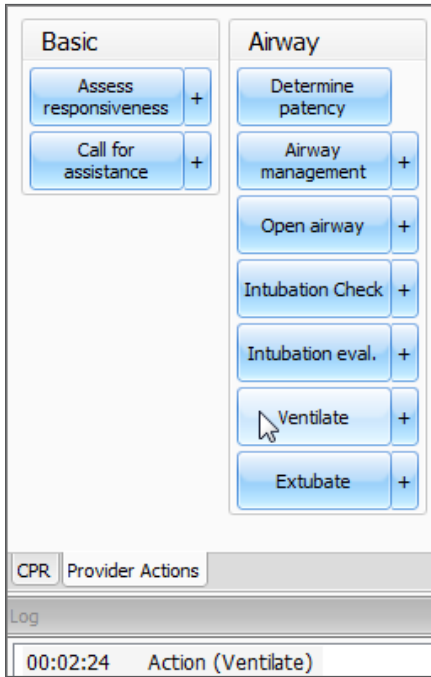
For example, if the 'Assess responsiveness' button is clicked when the session clock reads 00:03:36, the following entry is automatically generated:

SPECIAL BUTTON

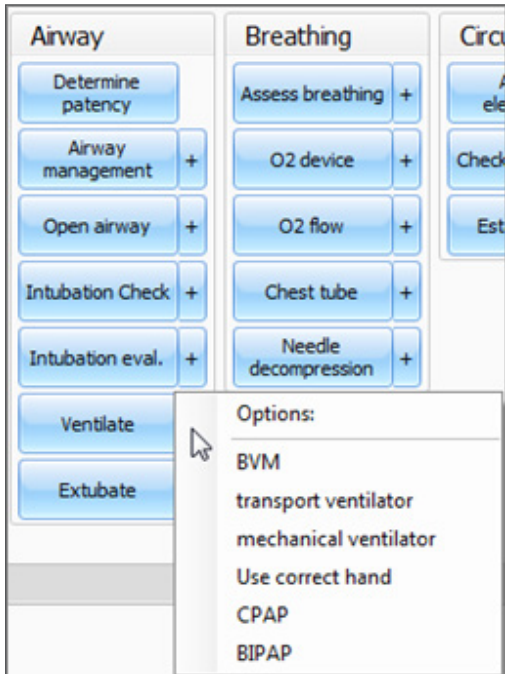
The special button adds additional functionality to the provider actions section.

The button, '+', allows the facilitator to be more specific on the provider action he/she wishes to log. For example, if the button 'Ventilate' is clicked, the following entry is created:

"00:02:24 Action (Ventilate)"

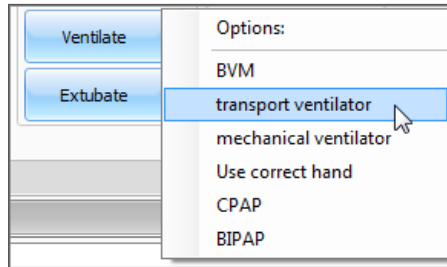


On the other hand, if the '+' button next to 'Ventilate' is clicked, a list of additional options appears.



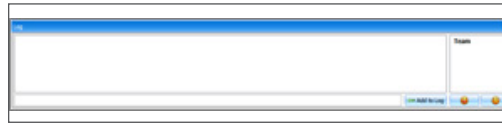
The facilitator can be more specific and choose, for example, 'transport ventilator'... and the following entry is added:

"00:01:28 Action (Ventilate): transport ventilator"

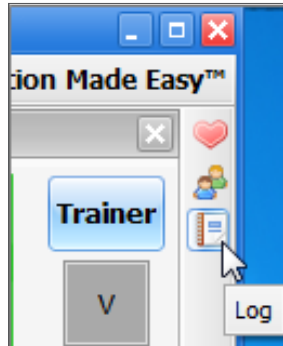


TEXT LOG

This is the large panel at the bottom of the Log Page, containing all the time-stamped text entries. Every event on a session is reflected as an entry in the Text Log.



Open the Text Log by clicking on the shortcut icon located on the upper right side of the application.



The different types of entries are classified as Actions, Detected Events, Evaluations, and Notes.

Text Log is subdivided in four different functions:

ACTIONS

Actions refer to those performed by one of the providers in the session. The facilitator can quickly log actions from the Provider Actions section and make the entry more specific using the Team Logging feature. The following is an example of an Action entry:

"00:07:24 Action (Assess responsiveness)"

DETECTED EVENTS

Each time one of the various sensors in the The simulator detects a provider action, it is automatically logged as a 'Detected' entry. These actions include artificial ventilations and chest compressions. The following example shows an entry after a provider administrates a chest compression:

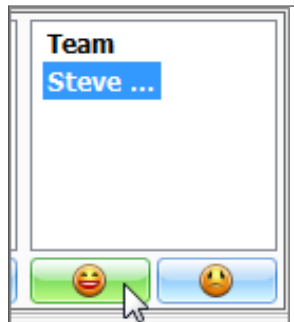
"00:05:36 Detected (chest compression): too weak"

EVALUATIONS

The facilitator adds evaluations by clicking on the 'Satisfactory' or 'Unsatisfactory' buttons next to Text Log.



The facilitator can evaluate individual providers with a single click.



For example, if provider Steve Parker did a correct procedure, the Evaluation entry would be:

00:36:01 [Steve Parker] Evaluation (Care Provided): Satisfactory

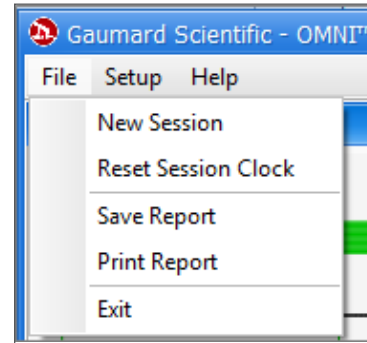
NOTES

Notes can be entered directly in the Text Log. The following is an example of a Note entry:

"00:51:09 [Steve Parker] Note: provider took too long to assess patient."

CPR LINK MENUS

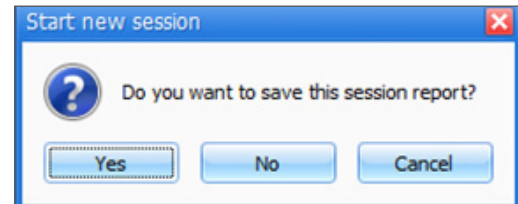
FILE



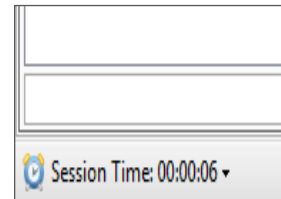
NEW SESSION

Clicking New Session in the file menu will:

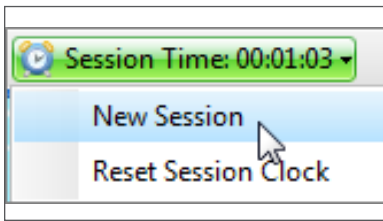
- Start a new simulation session
- Clear out log page
- Restart the session clock



The session clock is located at the bottom of the Log box.

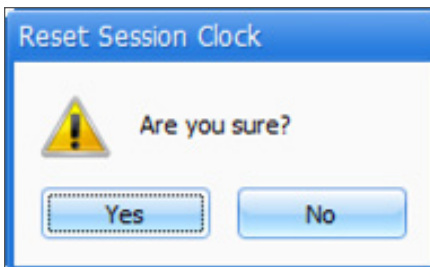


You can also start a new session by clicking on the session clock drop down menu, located at the bottom of the Log box, and selecting New Session.

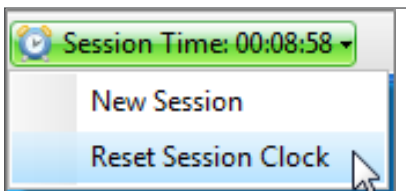


RESET SESSION CLOCK

Clicking on Reset Session Clock resets the clock back to zero.

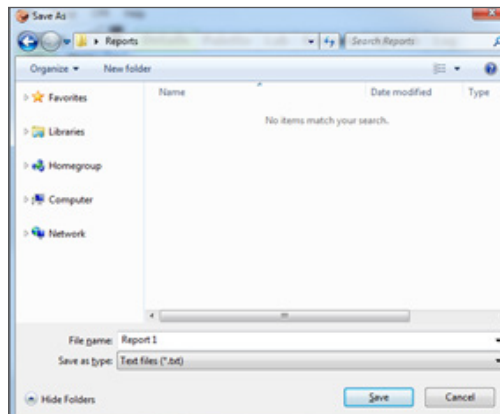


Reset the session Clock by clicking on the session clock drop down menu, located at the bottom of the Log box, and selecting Reset Session Clock.



SAVE REPORT

This option allows you to save all the information recorded in the log page as a text file. Clicking on it brings up the Save As dialog box:



Select the desired name and path, and click "Save".

A sample report is below:

| Gauvard® Scientific - Gauvard CPR | |
|-----------------------------------|---|
| 3/13/2012 10:40:27 AM | |
| Session: | |
| Facilitator: | [Team] |
| Providers: | [Team] |
| 00:00:04 | Detected (chest compression): peak = 44 mmHg, duration = 0.4 seconds. |
| 00:00:04 | Detected (chest compression): peak = 39 mmHg, duration = 0.1 seconds. |
| 00:00:04 | Detected (chest compression): peak = 48 mmHg, duration = 0.3 seconds. |
| 00:00:05 | Detected (chest compression): peak = 52 mmHg, duration = 0.2 seconds. |
| 00:00:05 | Detected (chest compression): peak = 39 mmHg, duration = 0.1 seconds. |
| 00:00:06 | Detected (chest compression): peak = 53 mmHg, duration = 0.1 seconds. |
| 00:00:06 | Detected (chest compression): peak = 10 mmHg, duration = 0.1 seconds. |
| 00:00:08 | Detected (chest compression): peak = 48 mmHg, duration = 0.2 seconds. |
| 00:00:08 | Detected (chest compression): peak = 43 mmHg, duration = 0.2 seconds. |
| 00:00:09 | Detected (chest compression): peak = 25 mmHg, duration = 0.1 seconds. |
| 00:00:10 | Detected (chest compression): peak = 22 mmHg, duration = 0.2 seconds. |
| 00:00:11 | Detected (chest compression): peak = 21 mmHg, duration = 0.1 seconds. |
| 00:00:11 | Detected (chest compression): peak = 54 mmHg, duration = 0.3 seconds. |
| 00:00:12 | Detected (chest compression): peak = 68 mmHg, duration = 0.6 seconds. |
| 00:00:12 | Detected (chest compression): peak = 58 mmHg, duration = 0.3 seconds. |
| 00:00:14 | Detected (chest compression): peak = 24 mmHg, duration = 0.1 seconds. |
| 00:00:15 | Detected (chest compression): peak = 42 mmHg, duration = 0.3 seconds. |
| 00:00:16 | Detected (chest compression): peak = 25 mmHg, duration = 0.2 seconds. |
| 00:00:16 | Detected (chest compression): peak = 46 mmHg, duration = 0.2 seconds. |
| 00:00:16 | Detected (chest compression): peak = 49 mmHg, duration = 0.1 seconds. |

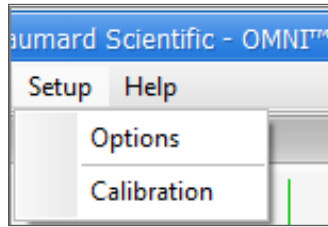
PRINT REPORT

This option allows you to print a text file containing all the information in the log for the latest session. Clicking on Print Report brings up the Print dialog box.

EXIT

You can exit the application at any time by going to File, Exit or by clicking on the red "x" button at the top right corner of the CPRLink.

SET UP



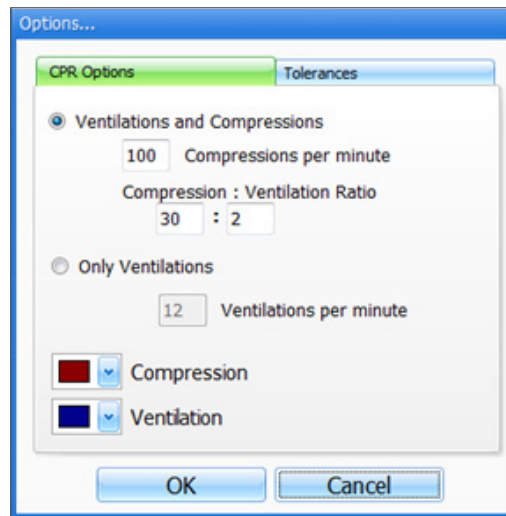
OPTIONS

The Options window contains the parameters accessible to the user for configuration.

CPR OPTIONS

- Select the number of desired compressions per minute.
- Specify the compression/ventilation ratio
- Select number of ventilations per minute (if the 'Only Ventilations' option is selected).

CPRLink will retain the options, tolerances and calibration data last entered.

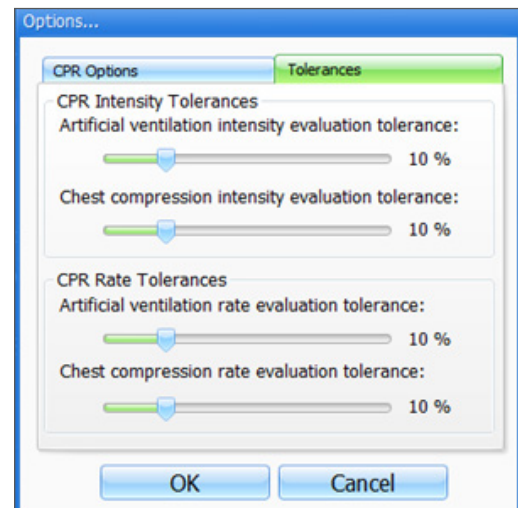


TOLERANCES

Select the tolerance and intensity of both chest compressions and ventilations. These parameters change the percentage deviation permitted while evaluating a compression or ventilation.

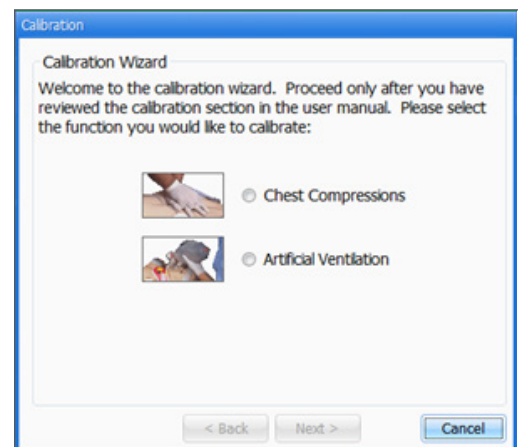
Intensity Tolerances: if the user has calibrated the software, these tolerances represent permissible deviation from the compressions or ventilations entered during the calibration procedure; otherwise the program uses default sensor values.

Rate Tolerances: the rate tolerance parameter sets the permissible deviation from the selected compression set. For example, if the user sets the Compression Rate at 100 compressions / minute and the Compression Rate Tolerance at 10 %, any compression frequency between 90 and 110 compressions per minute will be considered correct.



CALIBRATION

This tool allows you to easily calibrate the sensors inside the simulator. First choose which function you would like to calibrate: chest compressions or artificial ventilations.

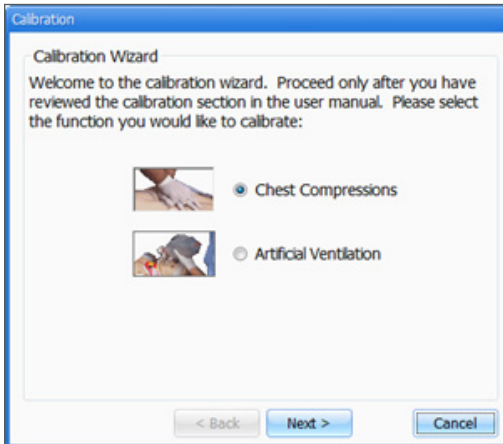


The procedures for each specific calibration are described in the sections below.

CHEST COMPRESSIONS/ARTIFICIAL VENTILATIONS

This tool allows you to calibrate the chest compressions and the artificial ventilations to your specific criteria. That is, you will be telling the system what a correct chest compression is and/or what a correct artificial ventilation is. Providers will be evaluated by the system based on this criteria.

The chest compressions and ventilations are calibrated in the same way. After making a selection, this dialog box is displayed:



Click next to proceed with the calibration.

The application will now ask you to perform a number of “correct” chest compressions or artificial ventilations, depending on which was selected.

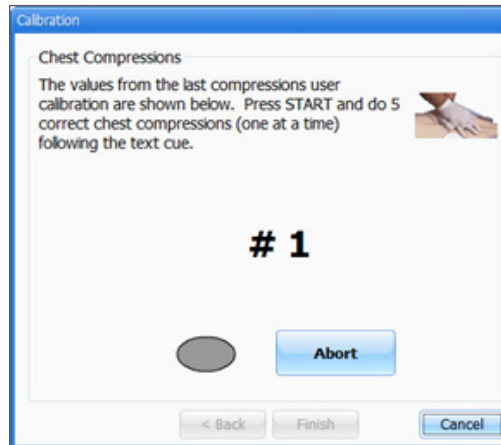
Click on Start to proceed.



The facilitator should follow the text cue on the screen to perform just one compression or ventilation at a time, until prompted for successive compressions/ventilations.

For example, if calibrating chest compressions:

The wizard prompts you with a “#1”.

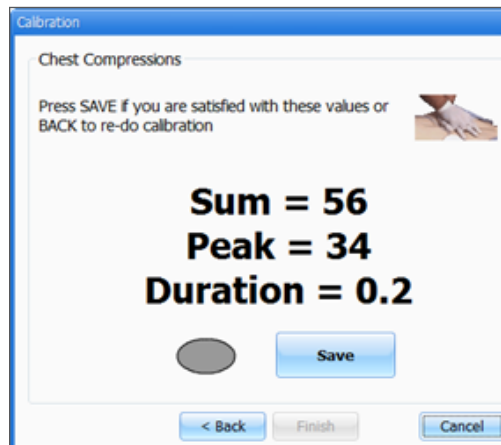


1. Perform one correct chest compression. A green filled oval indicates that the chest compression was successfully recorded.

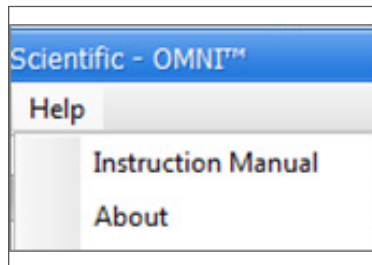
The wizard prompts you with “#2”.

2. Perform a second correct chest compression. A green filled oval indicates that the chest compression was successfully recorded.
3. Continue the process.

At the end of the calibrating session, the wizard shows the average peak, depth, and duration values for the procedure.



HELP



INSTRUCTIONAL MANUAL

Open the instructional manual.

ABOUT

Click to view the version of the software.



Appendix

Troubleshooting

GENERAL TROUBLESHOOTING GUIDE

Use the following table to find causes and solutions to a number of possible problems.

| Symptom | Possible Cause | Solution |
|---|--|--|
| Omni is not turning on | Power supply not connected to simulator | Connect the power supply cable to the simulator and the other end to a power source |
| | Communication cable not connected to Omni or the simulator | Connect the communication cable to the simulator and to Omni. |
| I lost communication with the simulator | Corrupted connection | Reboot Omni by unplugging the communication cable and reconnecting after a few seconds |
| Communication never gets established or is lost | Data cable is not connected | Ensure the Ethernet cable is plugged into Omni and the simulator |
| | | Verify the power cable is connected to the simulator |
| Omni is not detecting any compression or ventilations | System is not calibrated | Calibrate compressions and ventilations using Omni |
| Omni detects compressions but no ventilations | Module in the simulator is disconnected | Contact technical support to troubleshoot problem |
| Omni takes too long to boot up | A system restore is required | <ol style="list-style-type: none">1. Unplug the communication cable from Omni.2. Press and hold down the two outer keys, located on the right side of the controller, while reconnecting the communication cable.3. Once a "Please Wait" message appears on the screen, release the two outer keys. <p>Wait for the main screen to load and continue with simulations.</p> |

Warranty

EXCLUSIVE ONE-YEAR LIMITED WARRANTY

Gaumard warrants that if the accompanying Gaumard product proves to be defective in material or workmanship within one year from the date on which the product is shipped from Gaumard to the customer, Gaumard will, at Gaumard's option, repair or replace the Gaumard product.

This limited warranty covers all defects in material and workmanship in the Gaumard product, except:

Damage resulting from accident, misuse, abuse, neglect, or unintended use of the Gaumard product;

Damage resulting from failure to properly maintain the Gaumard product in accordance with Gaumard product instructions, including failure to properly clean the Gaumard product; and

Damage resulting from a repair or attempted repair of the Gaumard product by anyone other than Gaumard or a Gaumard representative.

This one-year limited warranty is the sole and exclusive warranty provided by Gaumard for the accompanying Gaumard product, and Gaumard hereby explicitly disclaims the implied warranties of merchantability, satisfactory quality, and fitness for a particular purpose. Except for the limited obligations specifically set forth in this one-year limited warranty, Gaumard will not be liable for any direct, indirect, special, incidental, or consequential damages, whether based on contract, tort, or any other legal theory regardless of whether Gaumard has been advised of the possibilities of such damages. Some jurisdictions do not allow disclaimers of implied warranties or the exclusion or limitation of consequential damages, so the above disclaimers and exclusions may not apply and the first purchaser may have other legal rights.

This limited warranty applies only to the first purchaser of the product and is not transferable. Any subsequent purchasers or users of the product acquire the product "as is" and this limited warranty does not apply.

This limited warranty applies only to the products manufactured and produced by Gaumard. This limited warranty does not apply to any products provided along with the Gaumard product that are manufactured by third parties. For example, third-party products such as computers (desktop, laptop, tablet, or handheld) and monitors (standard or touch-screen) are not covered by this limited warranty. Gaumard does not provide any warranty, express or implied, with respect to any third-party products. Defects in third-party products are covered exclusively by the warranty, if any, provided by the third-party.

Any waiver or amendment of this warranty must be in writing and signed by an officer of Gaumard.

In the event of a perceived defect in material or workmanship of the Gaumard product, the first purchaser must:

Contact Gaumard and request authorization to return the Gaumard product. Do **NOT** return the Gaumard product to Gaumard without prior authorization.

Upon receiving authorization from Gaumard, send the Gaumard product along with copies of (1) the original bill of sale or receipt and (2) this limited warranty document to Gaumard at 14700 SW 136 Street, Miami, FL, 33196-5691 USA.

If the necessary repairs to the Gaumard product are covered by this limited warranty, then the first purchaser will pay only the incidental expenses associated with the repair, including any shipping, handling, and related costs for sending the product to Gaumard and for sending the product back to the first purchaser. However, if the repairs are not covered by this limited warranty, then the first purchaser will be liable for all repair costs in addition to costs of shipping and handling.

Extended Warranty In addition to the standard one year of coverage, the following support plans are available: Two-Year Extension (covers second and third years)

Call for pricing (USA only)



Gaumard[®]
Simulators for Health Care Education

Contact Us

E-mail Technical Support: support@gaumard.com

Before contacting Tech Support you must:

1. Have the simulator's Serial Number
2. Be next to the simulator if troubleshooting is needed.

E-mail Sales and Customer Service: sales@gaumard.com

Phone: Toll-free in the USA: (800) 882-6655

Worldwide: 01 (305) 971-3790

Fax: (305) 667-6085

Post: Gaumard Scientific

14700 SW 136 Street

Miami, FL 33196-5691

USA

Office hours: Monday-Friday, 8:30am - 4:30pm EST (GMT-5, -4 Summer Time)

General Information

Gaumard[®], ZOE[®], Michelle[®], Mike[®], PEDI[®], Susie Simon[®], Susie[®], Simon[®] Code Blue[®], SIMA Models[®], SIMA GYN/AID[®], Virtual Instruments[®], Codemaker[®], Code Blue[®], NOELLE[®], Simulation Made Easy[™], HAL[®], CPRLink[™], Zack[™], RITA[™], Chloe[™], Seatbelt Susie[™], Krash Kids[™], Premie[™], GIGA[®], Omni[™], SmartSkin[™] are Trademarks of

© Gaumard Scientific Company, 2013

All rights reserved.

Gaumard[®], NOELLE[®], HAL[®] are trademarks of Gaumard Scientific Company, Inc.

Patented; Other Patents Pending

Always dispose of this product and its components in compliance with local laws and regulations.