



Suture Practice Leg

LF01034U

INSTRUCTION MANUAL



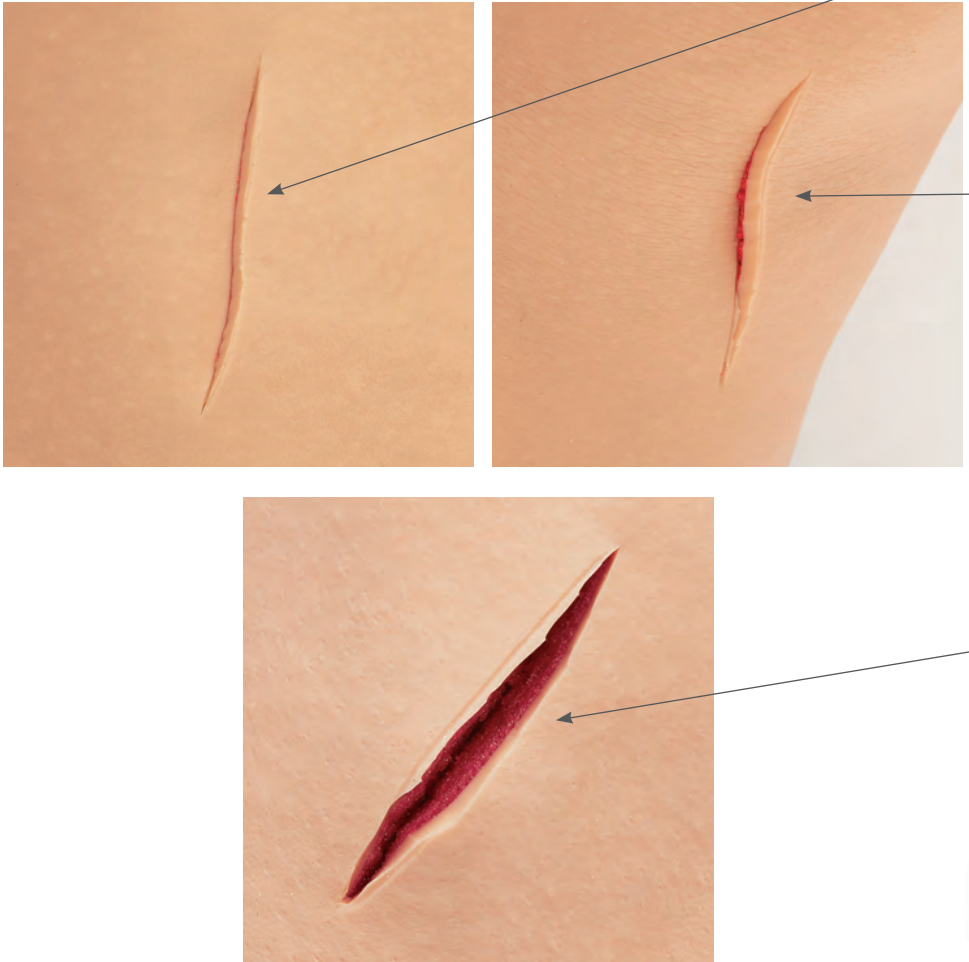
5-Year Warranty

ABOUT THE SIMULATOR

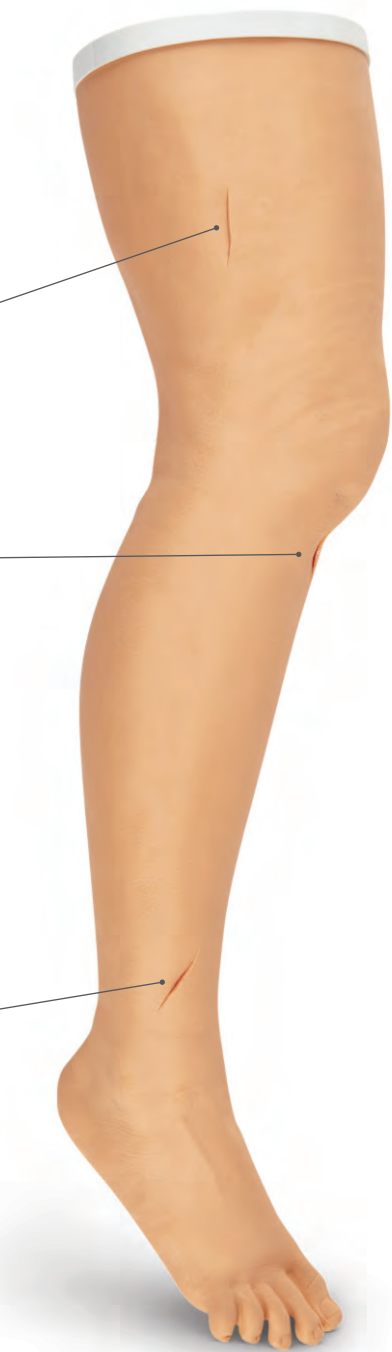
This practice and demonstration suture leg should be considered disposable, but with proper care and treatment it will serve its purpose for a long period of time.

The three “wounds” provided should be considered only examples of what can be done. With a sharp scalpel, additional “wounds” can be cut at any depth or location. Each can be repeatedly sutured until the skin at any one site becomes so heavily perforated that it will no longer support more suturing.

The “wounds” can be “bandaged” with most standard adhesive bandages. Residual adhesive can be removed with Glue-Off (LF01023U).



Actual product may vary slightly from photo. Nasco reserves the right to change product color, materials, supplies, or function as needed.



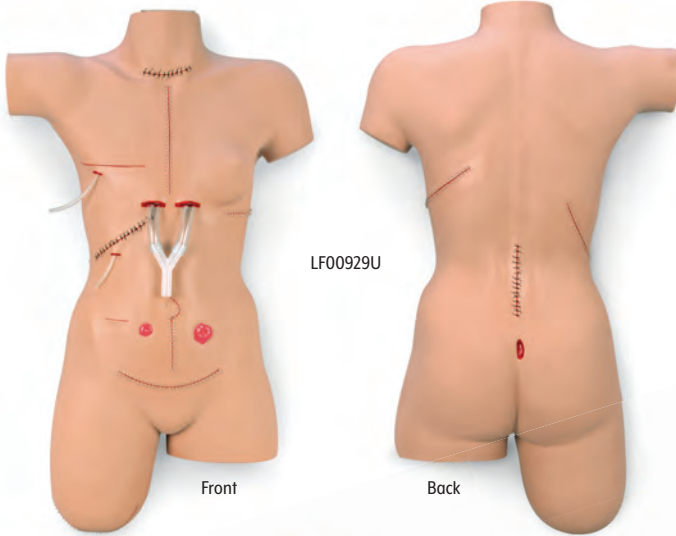
CARE OF SIMULATOR

- 1.** Do not use povidone-iodine prep solutions. These solutions will indelibly stain the leg.
- 2.** Cleaning – Use mild soap and water. Stubborn stains can be cleaned with Nasco Cleaner (LF09919U).
- 3.** Stains – The soft vinyl skin stains easily. Avoid contact with newspaper or other printed materials.
- 4.** Use only Glue-Off (LF01023U) to remove residual adhesive from bandaging. Apply a thin coat. Allow to dry. Rub off in circular motion.
- 5.** Storage – When not in continuous use, it is recommended to store the simulator in the storage box furnished, or cover it with a cloth or sheet of plastic.

Other Available **Life/form** Simulators

LF00929U Surgical Bandaging
LF01005U First Aid Arm
LF01028U Suture Practice Arm
LF01042U Suture Kit

LF01042U Facial Suturing Module Set
LF01063U Stump Bandaging, Upper
LF01064U Stump Bandaging, Lower



LF00929U

Front

Back



LF01028U



LF01046U



ONLINE:
EMAIL:
PHONE:
ADDRESS:

NascoHealthcare.com
lifeform@enasco.com
1.800.431.4310
901 Janesville Ave.
Fort Atkinson, WI 53538